



Wireless PDA Clinical Research System

Clinical researchers and sponsoring institutions are drowning in paperwork, with the liability exposure for any errors or omissions reaching crisis proportions. Filling out paper forms and then entering them on a desktop PC doesn't solve the problem. It just adds more work; and does little to avoid errors before they happen.



ZFrame
facilitates clinical
and research goals.

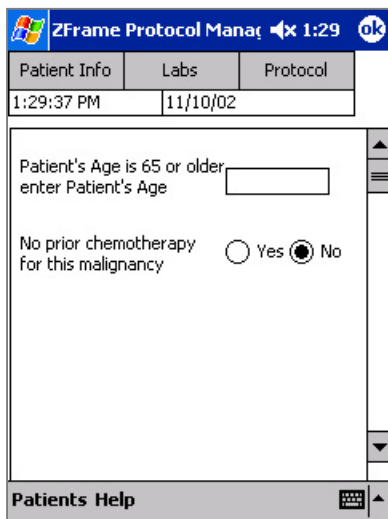
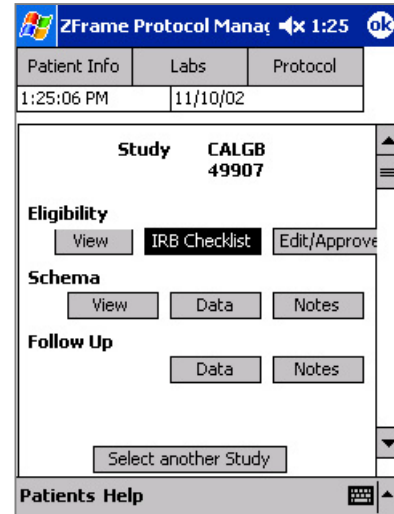
ZFrame Protocol Manager 1:22			
Patient Info	Labs	Protocol	
1:21:17 PM	11/10/02		
Renal			
NA	145	BUN	14
K	4.2	CRE	0.9
CL	98	Glucose	85
CA	11.1		
CBC			
Hematocrit	39		
Hemoglobin	11 gm/dl	pO2	80
Platlets	200,000	pCO2	40
RBCT	4.5 m/mm		
WBCT	30,000 kj		
Blood Gases(Art)			
Collection Time: 11/7/02 11:24:00 AM			
Patients Help			

The ZFrame system is based on portable wireless handheld devices. Clinicians get wireless access to protocols and clinical data in a convenient form factor, with a lot less paper.

The sponsoring institutions know that a complete audit trail is being captured at the point of care, with frequent and secure wireless updates to a central database.

Form1 11:23		
Eligibility Criteria	Enroll	Step 1
Step 2	Follow Up 1	Approve
Clear Save		
Edit Patient		
Delete Patient		
Save Patient		
New Patient		
11:23:21 AM		
Patients Protocols Help		

- New system for on-site clinical research data acquisition and database access, using handheld PDAs (PalmPilot or PocketPC) and high speed wireless cellular and local-area networks.
- Meets applicable regulatory standards for electronic case report forms, HIPAA requirements, and FDA 21 CFR Part 11.
- Easier to use than paper forms for staff at point of care, with immediate reference access to your server and the web.
- Easy to enforce protocol standardization not possible with paper forms.
- Faster than paper process allowing frequent and convenient updates to the central database using wireless transfer, eliminating data loss.
- Flexible, rapid, smooth transitions between electronic and paper-based systems, including electronic capture of paper documents with viewing and electronic mark-up on handheld devices.



- User review of field entries to validate data integrity at multiple levels (e.g. research nurse, investigator, oversight committee, auditor).
- Audit trail of every entry, mark-up or change - including capture of timed, hand-written signatures with the PDA device.
- Secure transactions plus multiple levels of content protection, including automatic data destruction in the event of PDA device theft.
- Works with existing data base(s) and secure internet protocols for economical and reliable implementation.

For more information, contact:

ZFrame, Inc.
 19 Scott Road
 Belmont, MA 02478
 phone: 617-489-5411
 fax: 617-489-1165
 www.zframe.com

